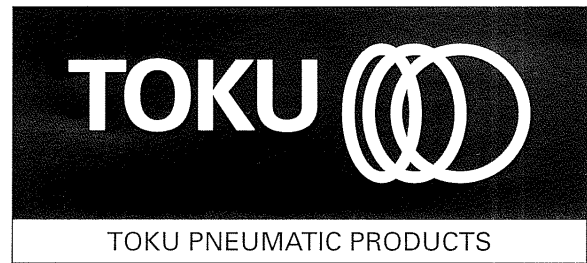
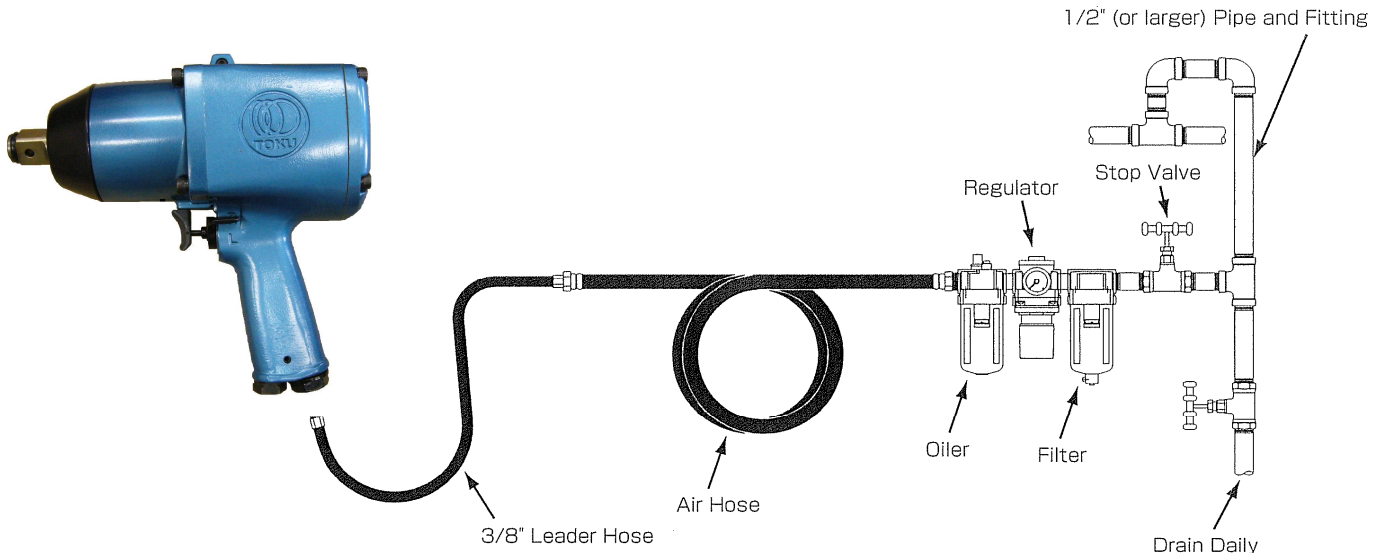


MAINTENANCE INSTRUCTIONS IMPACT WRENCH MODEL MI-20P



AIR HOSE AND HOSE CONNECTION:



OPERATING INSTRUCTIONS



“WARNING”

1. ALWAYS USE APPROVED EYE PROTECTION WHEN OPERATING THIS TOOL.
2. ALWAYS USE IMPACT SOCKETS IN GOOD CONDITION. SOCKETS IN BAD CONDITION REDUCE IMPACT POWER AND COULD ALSO SHATTER AND CAUSE POSSIBLE PERSONAL INJURY. NEVER USE HAND SOCKETS.
3. ALWAYS USE THE SIMPLEST HOOKUP POSSIBLE. LONG, SPRINGY EXTENSION BARS ABSORB IMPACT AND COULD BREAK LOOSE AND CAUSE POSSIBLE PERSONAL INJURY.
4. ALWAYS DIRECT EXHAUST AWAY FROM YOURSELF AND OTHERS IN THE AREA.
5. ALWAYS DISCONNECT TOOL WHEN NOT IN USE.

LUBRICATION

To flush out gum and dirt :

1. Daily before and after each shift, pour a liberal quantity of gum solvent oil into air line.
2. Connect tool to air line. Operate tool.
3. Repeat procedure before storing.
4. Monthly, check grease in impact unit.
5. At the timing of service, check grease class and q'ty if they are in accordance with the description below.
 - Grease class : NLGI No.2 (containing molybdenum)
 - Quantity in impact unit : 11 g

AIR SUPPLY

1. Supply tool with 0.6MPa of clean, dry air. Higher pressure drastically reduces tool life and can void warranty.
2. See diagram above for Pipe, Hose and Fitting size.
3. When using two or more tools, Air Hoses should be larger than Leader Hose.

LOSS OF POWER/ERRATIC ACTION (possible causes)

1. Reduced compressor output.
2. Excessive drain on air line.
3. Moisture or restricted pipe, hose or fittings.
4. Improper size or poor condition of pipe, hose or fittings
5. Dirt or gum deposits cut tool power. To correct this, check and clean air strainer, then repeat lubrication procedure. (If outside conditions are in order, disassemble tool, replace worn or damaged parts, clean, assemble and lubricate.)

REPLACEMENT PARTS

Always use GENUINE TOKU TOOLS Replacement Parts.

When replacement parts are required, order by Part No. and Description in the Parts List.

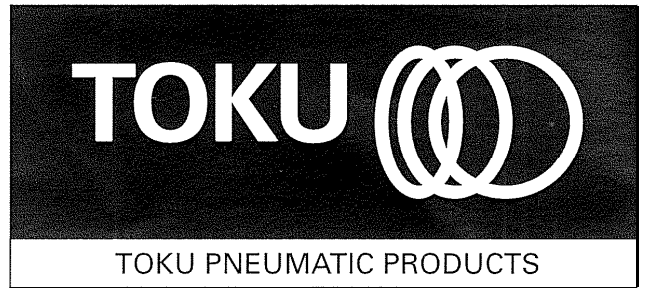
SOUND LEVEL

Sound Level dB(A) in accordance with ISO 15744 : Pressure 94
Power 105

VIBRATIONS LEVEL

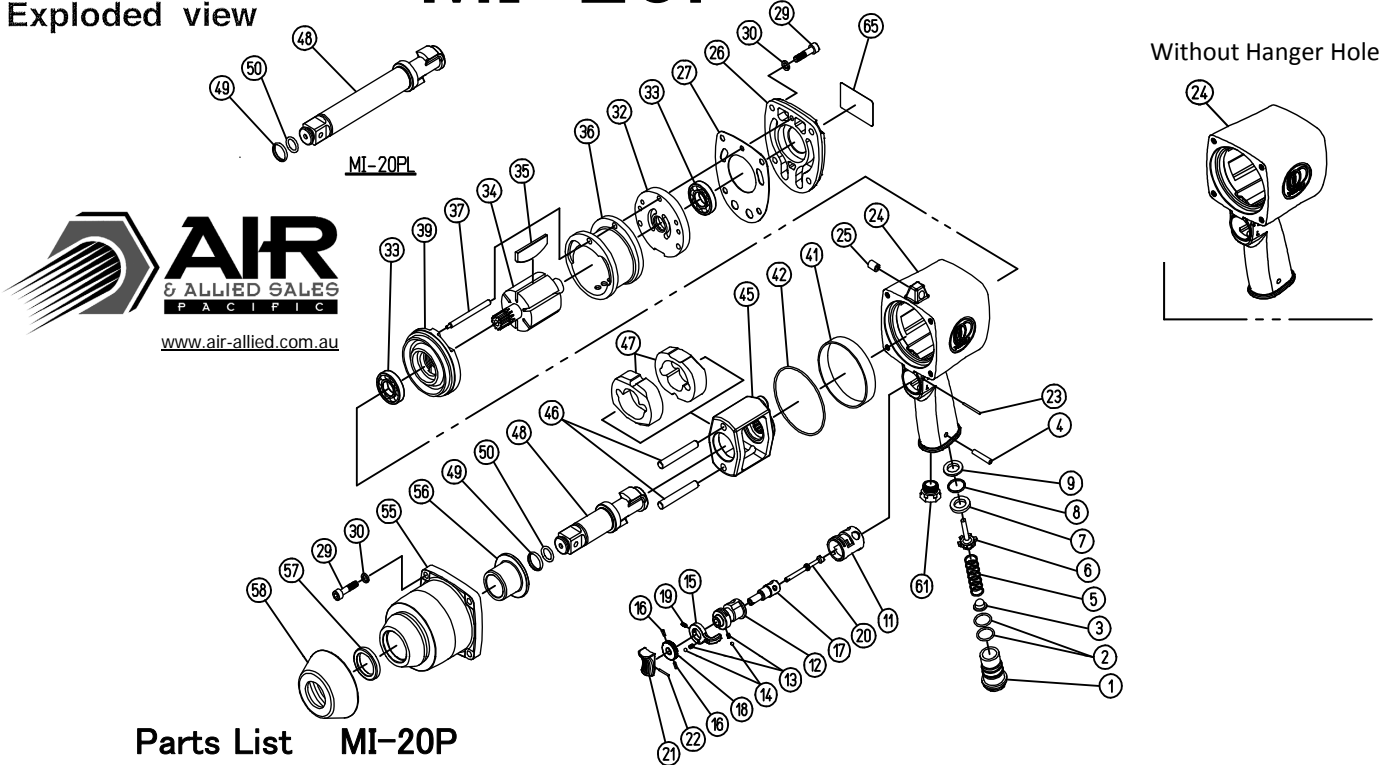
Vibration m/s² in accordance with ISO 8662-7 : 4.5

MAINTENANCE INSTRUCTIONS 3/4" IMPACT WRENCH



MODEL MI-20P

Exploded view



Parts List MI-20P

Index No.	Parts No.	Description	Q'ty Req.	Index No.	Parts No.	Description	Q'ty Req.
001	43-14-38-060	Inlet Bushing (PT)	1	032	43-14-20-37B	Rear End Plate	1
	43-14-36-070	Inlet Bushing (NPT)	(1)	033	13-01-20-005	Bearing (EE-5)	2
002	13-11-17-017	O-Ring (AS568-017)	2	034	43-14-36-390	Rotor	1
003	13-68-03-049	Air Screen	1	035	13-71-07-012	Vane	6
004	13-06-20-058	Spring Pin (3/16 X25.4)	1	036	43-18-96-360	Liner	1
005	13-08-03-181	Throttle Valve Spring	1	037	43-18-96-A70	Liner Pin	1
006	43-13-94-080	Throttle Valve	1	039	43-18-96-38B	Front End Plate	1
007	13-68-04-007	Throttle Valve Seat	1	041	43-18-96-930	Housing Adaptor Ring	1
008	13-11-03-015	O-Ring (S-18)	1	042	13-11-17-040	O-Ring (AS568-040)	1
009	43-13-95-D80	Throttle Valve Spacer	1	045	43-18-96-440	Hammer Frame	1
011	43-18-96-201	Reverse Valve Bushing	1	046	43-18-96-460	Hammer Pin	2
012	43-18-96-212	Reverse Valve	1	047	43-18-96-450	Hammer	2
013	13-08-09-005	Spring	2	048	43-18-96-500	Anvil Shank	1
014	13-05-02-008	Steel Ball 1/8	2	049	13-08-03-113	Socket Retainer	1
015	43-18-96-231	Reverse Valve Lever	1	050	13-11-01-013	O-Ring (P-12.5)	1
016	13-06-02-208	Spring Pin 2 x 8	2	055	43-18-96-520	Clutch Housing	1
017	43-18-96-151	Control Valve	1	056	43-18-96-490	Shank Bushing	1
018	43-18-96-261	Control Valve Knob	1	057	13-12-02-030	Oil Seal VB25355	1
019	13-22-03-006	Hex.Socket Seat Screw M3 x 6	1	058	13-62-01-018	Nose Shield	1
020	43-18-96-100	Throttle Push Pin	1	061	43-18-96-051	Exhaust Deflector	1
021	13-67-03-060	Trigger	1	065	13-73-05-093	Name Plate	1
022	13-06-01-134	Spring Pin (1.6 x 14)	1		43-18-96-50C	Anvil Shank S CP(Incl. Index No.48,49&50)	(1CP)
023	13-04-06-022	Pin	1		43-18-96-52C	Clutch Houjing CP (Incl.Index No.55,56&57)	(1CP)
024	43-18-96-011	Motor Housing	1	MI-20PL			
	43-18-98-011	Motor Housing (Without Hanger Hole)	(1)	048	43-19-01-500	Anvil Shank L	1
025	13-06-08-010	Spring Pin (8 x 10)	1	049	13-08-03-113	Socket Retainer	1
026	43-18-96-350	Housing Cover	1	050	13-11-01-013	O-Ring (P-12.5)	1
027	13-62-02-049	Housing Cover Packing	1				
029	13-17-06-025	Hex.Socket Head Cap Screw (M6 x 25)	8		43-19-01-50C	Anvil Shank L CP(Incl. Index No.48,49&50)	(1CP)
030	13-13-11-016	Spring Washer 1/4	8				